

# **Genes, Economics, and Happiness**

Working Paper No. 2010 - 24

# Genes, Economics, and Happiness \*

Jan-Emmanuel De Neve

*London School of Economics*

Nicholas A. Christakis

*Harvard University*

James H. Fowler

*University of California, San Diego*

Bruno S. Frey

*University of Zurich*

December 4, 2010

## Abstract

Research on happiness has produced valuable insights into the sources of subjective well-being that are of importance to economics. A major finding from this literature is that people exhibit a “baseline” level of happiness that shows persistent strength over time. Here we explore the extent to which baseline happiness is influenced by genetic variation. Using data from Add Health, we employ a twin study design to show that genetic variation explains about 33% of the variation in happiness, and that the influence of genes varies by gender (women 26%, men 39%) and tends to rise with age. We also present evidence that variation in a specific gene predicts happiness. Individuals with a transcriptionally more efficient version of the serotonin transporter gene (*SLC6A4*) are significantly more likely to report higher levels of life satisfaction—having one or two alleles of the more efficient type raises the average likelihood of being very satisfied with one’s life by 8.5% and 17.3%, respectively. Finally, using data from an independent source (the Framingham Heart Study) we show that a linked single nucleotide polymorphism (rs2020933) in the *SLC6A4* gene also predicts life satisfaction. These results are the first to identify a specific gene that may be associated with baseline levels of happiness.

---

\*Corresponding author: Jan-Emmanuel De Neve, London School of Economics, Houghton Street, London WC2A 2AE, United Kingdom (email: j.c.de-neve@lse.ac.uk). The authors thank Dan Benjamin, Chris Chabris, Chris Dawes, Pete Hatemi, David Laibson, Jaime Settle, Albert Vernon Smith, and Piero Stanig. This paper also benefited from comments at the Integrating Genetics and Social Sciences conference (Boulder, CO) and the UCL Institute of Neurology seminar. De Neve benefited from the generous hospitality of the Institute for Empirical Research in Economics (IEW) at the University of Zurich and the Center for Research in Economics, Management and the Arts (CREMA). Research was supported by National Institute on Aging grant P-01 AG-031093 and National Science Foundation grant SES-0719404

*So our happiness depends on our genes and our experience (past and present). Any social reformer has to be mainly interested in the role of experience since that is all that we can change. But we will never understand that bit unless we understand the complete reality, and the complete reality includes a strong role for the genes.*

—Lord Richard Layard, Lionel Robbins Memorial Lecture, LSE. February 27, 2003.

## 1 Introduction

Happiness research has become one of the liveliest subjects in economics in recent years<sup>1</sup>. Its main goal is to explain the determinants of individual life satisfaction or subjective well-being (often loosely called happiness). Economists have mainly dealt with economic influences, in particular, income and its distribution, labor market regulation, unemployment and inflation. For example, Di Tella, MacCulloch and Oswald (2001) used happiness surveys to determine the welfare costs of inflation and unemployment, showing that unemployment depresses reported well-being more than does inflation. In fact, their longitudinal study of life satisfaction reports enabled these authors to estimate that people would trade off a 1 percentage-point increase in the unemployment rate for a 1.7 percentage-point increase in the inflation rate. Systematic influences on life satisfaction have also been found for socio-demographic factors (age, gender, race, marital status, children, and social networks) as well as for political and cultural factors (such as democracy, decentralization, and religiosity). While variables like socio-economic status, income, marriage, education, and religiosity are significantly associated with individual happiness, none typically accounts for more than 3%

---

<sup>1</sup>Books are e.g. Kahneman, Diener and Schwarz (1999), Graham and Pettinato (2002), Frey and Stutzer (2002a), Van Praag and Ferrer-I-Carbonell (2004), Layard (2005), or Frey (2008); articles are e.g. Easterlin (1974), Clark and Oswald (1996), Frey and Stutzer (2002b), Di Tella, MacCulloch and Oswald (2003), Luttmer (2005), Di Tella and MacCulloch (2006), Rayo and Becker (2007), Dolan, Peasgood and White (2008), Fowler and Christakis (2008), Urry, Nitschke, Dolski, Jackson, Dalton, Mueller, Rosenkranz, Ryff, Singer and Davidson (2004) or Clark, Frijters and Shields (2008).

of the variation (Layard 2005, Frey 2008). Moreover, changes in these variables appear to yield only short term changes to happiness. For example, the “Easterlin Paradox” (Easterlin 1974, 2004, Clark, Frijters and Shields 2008) suggests that increases in real income either have no lasting effect on happiness, or only a quite small one (Stevenson and Wolfers 2008). This is because happiness levels tend to revert toward what psychologists describe as a “set point” or “baseline” of happiness that is influenced by personality and genetic predispositions (Kahneman et al. 1999, Diener and Lucas 1999).

Although previous studies have shown that baseline happiness is significantly heritable (Lykken and Tellegen 1996), none has so far identified a specific gene associated with subjective well-being. In this article we replicate the earlier work showing that happiness is significantly influenced by genetic variation in a nationally-representative sample, and then we present evidence of a specific gene that is associated with life satisfaction. We find that individuals with a transcriptionally more efficient version of the serotonin transporter gene (*SLC6A4*, also known as 5-HTT) are significantly more likely to report higher levels of life satisfaction and we replicate this association on an independent data set.

Before we detail our genetic association approach and results, we explore the general influence that genes may have on happiness through a twin study design. A growing number of studies use twin research techniques to gauge the relative importance of genetic and environmental influences on economic behaviors (e.g. Cesarini, Dawes, Johannesson, Lichtenstein and Wallace (2009)). We estimate the heritability of subjective well-being at 33%, indicating that about one-third of the variance in individual life satisfaction can be attributed to genetic influences. We also find that there are meaningful differences across gender (women 26%, men 39%) and that the heritability of happiness tends to increase with age.

Although twin studies are an important step in establishing the influence of genes in subjective well-being, they do not identify the specific genes involved. The increasing availability of genotypic information now allows us to test hypotheses about targeted genes and their effects. One place to start the search for such genes is among those that have already been

shown to account for variation in emotional states. Among these, *SLC6A4* is a prime candidate. The *SLC6A4* gene encodes a transporter in the cell wall that absorbs serotonin into the pre-synaptic neuron in parts of the brain that influence mental states (Hariri, Mattay, Tessitore, Kolachana, Fera and Goldman 2002, Bertolino, Arciero, Rubino, Latorre, Candia and Mazzola 2005, Heinz, Braus, Smolka, Wrase, Puls, Hermann and et al. 2005, Canli and Lesch 2007). *SLC6A4* has been studied for more than twenty years and much is known about the way different versions of this gene influence transcription, metabolism, and signal transfers between neurons, all of which may influence personality. In particular, less transcriptionally efficient variants of this gene have been shown to moderate the influence of life stress on depression (Caspi, Sugden, Moffitt, Taylor, Craig, Harrington, McClay, Mill, Martin, Braithwaite and Poulton 2003); and the more transcriptionally efficient alleles have been linked to optimism (Fox, Ridgewell and Ashwin 2009). As a result, economists have specifically identified *SLC6A4* as a candidate gene for further study (Benjamin, Chabris, Glaeser, Gudnason, Harris, Laibson, Launer and Purcell 2007).

Using data from two independent sources, the National Longitudinal Study of Adolescent Health (Add Health) and the Framingham Heart Study (FHS), we analyze the relationship between variants of *SLC6A4* and life satisfaction. We find evidence of significant association in both data sets, suggesting that the *SLC6A4* gene may play a role in explaining subjective well-being. While we do not claim that *SLC6A4* determines happiness, nor do we exclude the possibility that several other genes may play a role, we do think that the results suggest at least one possible causal pathway able to account for the influence of genes on happiness. And to our knowledge, this is the first study to identify a specific gene involved in the process.

## 2 The Add Health Data

This research is based on genetic and survey data collected as part of the National Longitudinal Study of Adolescent Health (Add Health). The study was designed to explore the health-related behavior of adolescents in grades 7 through 12, but it has been em-

ployed widely across disciplines and has made recent contributions in economics (Echenique, Fryer and Kaufman 2006, Echenique and Fryer 2007, Alcott, Karlan, Mobius, Rosenblat and Szeidl 2007, Norton and Han 2009). In the first wave of the Add Health study (1994–1995) 80 high schools were selected from a sampling frame of 26,666. based on their size, school type, census region, level of urbanization, and percent of the population that was white. Participating high schools were asked to identify junior high or middle schools that served as feeder schools to their school. This resulted in the participation of 145 middle, junior high, and high schools. From those schools, 90,118 students completed a 45-minute questionnaire and each school was asked to complete at least one School Administrator questionnaire. This process generated descriptive information about each student, the educational setting, and the environment of the school. From these respondents, a core random sample of 12,105 adolescents in grades 7-12 were drawn plus several over-samples, totaling more than 27,000 adolescents. These students and their parents were administered in-home surveys in the first wave.

Wave II (1996) was comprised of another set of in-home interviews of more than 14,738 students from the Wave I sample and a follow-up telephone survey of the school administrators. Wave III (2001–02) consisted of an in-home interview of 15,170 Wave I participants. Finally, Wave IV (2008) consisted of an in-home interview of 15,701 Wave I participants. The result of this sampling design is that Add Health is a nationally representative study. Women make up 49% of the study’s participants, Hispanics 12.2%, Blacks 16.0%, Asians 3.3%, and Native Americans 2.2%.<sup>2</sup> Participants in Add Health also represent all regions of the United States: the Northeast makes up 17% of the sample, the South 27%, the Midwest 19%, and the West 17%.

In Wave I of the Add Health study, researchers created a sample of sibling pairs including all adolescents that were identified as twin pairs, half-siblings, or unrelated siblings raised together. The sibling-pairs sample is similar in demographic composition to the full Add

---

<sup>2</sup>A breakdown for those providing DNA samples is presented in the Appendix.

Health sample (Jacobson and Rowe 1998). The number of identical (monozygotic) and non-identical (dizygotic) twins who participated in Wave III was 1,098 (434 MZ and 664 DZ), with 872 twins (434 MZ and 438 DZ) in same sex pairs. The Add Health data has been widely used for twin studies (Harris, Halpern, Smolen and Haberstick 2006, Fowler, Baker and Dawes 2008).

Allelic information for a number of genetic markers were collected for 2,574 individuals as part of Wave III. The genes chosen for inclusion in the study are known to affect brain development, neurotransmitter synthesis and reception, and hormone regulation. Allelic information includes markers that identify alleles (variants) of the serotonin transporter gene or *SLC6A4*. The promotor region of *SLC6A4* (called 5-HTTLPR) contains a variable number tandem repeat (VNTR) sequence that influences transcriptional activity—the “long” 528 base-pair allele is associated with a much higher basal activity than the “short” 484 base-pair allele. Allele frequency for the short allele is 43% and for the long allele is 57%. Details of the DNA collection and genotyping process are available at the Add Health website (Add Health Biomarker Team 2007).

In Wave III, subjects were asked “How satisfied are you with your life as a whole?” Answer categories ranged from very dissatisfied, dissatisfied, neither satisfied nor dissatisfied, satisfied, to very satisfied. Alternative answers were “refused” or “don’t know” and these were discarded for the purpose of this study (less than 1% of interviewees gave such a response). This question and answer formulation is standard in the economics of happiness literature (Di Tella et al. 2001, Di Tella et al. 2003, Kahneman and Krueger 2006, Frey 2008). The distribution of answers to the life satisfaction question is shown in Appendix. In line with the happiness literature, a large majority of respondents report being satisfied or very satisfied (Frey and Stutzer 2002a). That most people, in fact, report a positive level of subjective well-being is the object of a paper by Diener and Diener (1996), where the authors find this distribution to be representative in a wide cross-national analysis.

## 3 Twin Design

### 3.1 Methods

Twin studies compare the traits, behaviors, and other outcomes (called “phenotypes”) of twins who share 100% of their genetic material (identical or *monozygotic* twins) to those who share 50% of their genetic material (fraternal or *dizygotic* twins) in order to estimate the relative importance of genetic and environmental influences. If we assume that the influence of the environment on the phenotype is the same for monozygotic (MZ) and dizygotic (DZ) twins (the “common environments” assumption), and there are no gene-environment interactions, then the variance in happiness can be decomposed into additive genetic effects (A), common or shared environmental influences (C), and unshared or unique environmental influences (E). The ACE model does not allow us to observe environmental and genetic influences directly, but it does allow us to estimate these effects by observing the covariance across MZ and DZ twins.

Although the assumptions underlying the ACE model are strong, the method produces results that have been validated in numerous other studies. For example, studies of twins reared apart generate similar heritability estimates to those generated by studies of twins raised together (Bouchard 1998). More recently, Visscher, Medland, Ferreira, Morley, Zhu, Cornes, Montgomery and Martin (2006) utilize the small variance in percentage of shared genes among DZ twins to estimate heritability without using any MZ twins, and they are able to replicate findings from studies of MZ and DZ twins reared together. Moreover, personality and cognitive differences between MZ and DZ twins persist even among twins whose zygosity has been miscategorized by their parents, indicating that being mistakenly treated as an identical twin by ones parents is not sufficient to generate a difference in concordance (Scarr and Carter-Saltzman 1979, Kendler, Neale, Kessler, Heath and Eaves 1993, Xian, Scherrer, Eisen, True, Heath, Goldberg, Lyons and Tsuang 2000).

The ACE model can be formally expressed as:



$$y_{ij} = \mu + A_{ij} + C_j + E_{ij}$$

where  $y$  is the measure of the phenotype,  $j$  denotes the family,  $i$  denotes the individual twin in the family,  $\mu$  is the mean of this phenotype across all observations,  $A_{ij} \sim N(0, \sigma_A^2)$  is the additive genetic component,  $C_j \sim N(0, \sigma_C^2)$  is the shared environment component, and  $E_{ij} \sim N(0, \sigma_E^2)$  is the unshared environment component. Notice that these assumptions imply:

$$\text{Var}(y) = \sigma_A^2 + \sigma_C^2 + \sigma_E^2.$$

If we further assume that the unshared environment is uncorrelated between twins ( $\text{COV}(E_{1j}, E_{2j}) = 0$ ), that genes are perfectly correlated between MZ twins ( $\text{COV}_{MZ}(A_{1j}, A_{2j}) = \sigma_A^2$ ), and the covariance between DZ twins who share half their genes on average is half that of identical twins ( $\text{COV}_{DZ}(A_{1j}, A_{2j}) = \frac{1}{2}\sigma_A^2$ ), then we have two additional equations

$$\text{COV}_{MZ}(y_{1j}, y_{2j}) = \sigma_A^2 + \sigma_C^2,$$

$$\text{COV}_{DZ}(y_{1j}, y_{2j}) = \frac{1}{2}\sigma_A^2 + \sigma_C^2$$

The covariance equations reflect the fact that DZ twins share on average 50% of their genes whereas MZ twins share all of their genes. Based on these equations, we can estimate the ACE model via a random effects regression model with the  $2 \times 2$  variance-covariance matrix specified as:

$$\Omega_j = \begin{bmatrix} \sigma_A^2 + \sigma_C^2 + \sigma_E^2 & R_j \sigma_A^2 + \sigma_C^2 \\ R_j \sigma_A^2 + \sigma_C^2 & \sigma_A^2 + \sigma_C^2 + \sigma_E^2 \end{bmatrix}$$

where  $R$  is the genetic relatedness of the twin pair equaling 1 for MZ twins and  $\frac{1}{2}$  for DZ twins. We use the variances of the random effects to generate estimates of heritability,

common environment, and unshared environment.<sup>3</sup>

To generate the ACE estimates we use the structural equation modeling program *OpenMx* developed by Neale, Boker, Xie and Maes (2010). In addition to estimating ACE models, we estimate all of the possible submodels to compare model fit. These include an AE model, which assumes only genes and unshared environment influence the phenotype ( $C=0$ ), a CE model which assumes only common and unshared environment influence the phenotype ( $A=0$ ), and an E model ( $A=0$  and  $C=0$ ). If a submodel fits better than the general ACE model, this suggests the parameters left out of the submodel are not significantly contributing to model fit. To compare the submodels we use the Akaike Information Criterion (AIC) in maximum likelihood estimation, where smaller values indicate better fit.

### 3.2 Twin results

When assessing the role of genetic influences, the first step is to compare the correlation in phenotype among MZ twin pairs to that of DZ twin pairs. For life satisfaction, the correlation coefficient for MZ twins is 0.345 and for DZ twins is 0.129. The difference in correlations is significant ( $p = 0.032$ , one sided). These correlations show that identical twins are significantly more similar in their level of happiness than fraternal twins, which suggests that genetic factors might play a role in this trait.

In Table 1 we report results from several variance decomposition models described above. Note that the ACE model yields a heritability estimate of 33%, while the estimate for common environment is 0% and the estimate for unshared environment is 67%. In other words, about a third of the variance in happiness in our sample can be attributed to variance in genetic factors. We also examine the submodels and find that the models with lowest AIC all include A, suggesting that the finding that happiness is heritable is robust to different model specifications.<sup>4</sup>

---

<sup>3</sup>They are defined as  $\frac{\sigma_A^2}{\sigma_A^2 + \sigma_C^2 + \sigma_E^2}$ ,  $\frac{\sigma_C^2}{\sigma_A^2 + \sigma_C^2 + \sigma_E^2}$ , and  $\frac{\sigma_E^2}{\sigma_A^2 + \sigma_C^2 + \sigma_E^2}$  respectively.

<sup>4</sup>When we split our twin sample by sex we find that there are significant differences between men and women. As in Table 1, Table 3 in the Appendix shows that the AE models fit happiness best according to

	Life satisfaction			<i>Fit statistics</i>						
	$a^2$	$c^2$	$e^2$	ep	-2ll	df	AIC	diff -2ll	diff df	p
ACE	0.331	0.000	0.669	4	1878.9	795	288.9	-	-	-
AE	0.331	-	0.669	3	1878.9	796	286.9	0	1	1
CE	-	0.257	0.743	3	1882.9	796	290.9	4	1	0.05
E	-	-	1	2	1907.2	797	313.2	28.3	2	0

Table 1: Summary of ACE twin model results. Note: The models consist of additive genetic factors (A), shared or common environmental factors (C), and unshared environmental factors (E). The model includes 217 MZ and 219 DZ same-sex twin pairs.

Compared to previous studies of happiness, our heritability estimate of 33% is on the lower end of reported estimates. In fact, the seminal paper by Lykken and Tellegen (1996) estimated heritability at about 50%, and subsequent estimates ranged from 38% (Stubbe, Posthuma, Boomsma and De Geus 2005) to 36–50% (Bartels and Boomsma 2009) to 42–56% (Nes, Roysamb, Tambs, Harris and Reichborn-Kjennerud 2006). However, the Add Health study includes other questions that suggest the heritability of happiness rises as people age. The standard life satisfaction question used in this paper is only asked of Add Health subjects in Wave III (2001–02), but in other interview waves the following question is asked of participants: “How often was the following true during the past seven days? You felt happy.” Answers range from “never or rarely” to “most of the time or all of the time.” Figure 3 shows the MZ and DZ twin pair correlations of the time series that combines the “life satisfaction” and “You felt happy” questions. The basic heritability estimates that result from comparing MZ and DZ correlations range from 22% in Wave I (1994) to 54% in Wave IV (2008). This longitudinal analysis is consistent with a growing body of longitudinal twin research that shows that the heritability of a number of traits (e.g. intelligence) increases with age (Plomin, DeFries, McClearn and McGuffin 2008). It also shows that the finding that happiness is heritable is robust to a variety of measures and time periods over the life course.

---

the AIC values. However, the heritability estimate for males is 39%, whereas for females it is 26%.

## 4 Genetic Association

Twin studies are important because they allow us to gauge the relative influence of our genetic makeup on subjective well-being. However, twin studies do not give insight into which specific genes may be involved in explaining the heritability of happiness. Because Add Health collected a number of specific genetic markers, it presents us with a unique opportunity to move beyond a twin design study. Below we introduce some basic concepts in genetics, our genetic association research design, and present results for our candidate gene study.

### 4.1 Basic Concepts in Genetics

Human DNA is composed of an estimated 21,000 genes that form the blueprint for molecules that regulate the development and function of the human body. Genes are distinct regions of human DNA that are placed in the 23 pairs of chains, or chromosomes, that make up all human DNA. Almost all human cells contain the same DNA they inherited at the moment of conception.

Individuals inherit one half of their DNA from each parent, with one copy of each gene coming from the mother and one copy from the father. Some genes come in different versions, known as “alleles”—for example, sickle cell disease results from a particular allele coding for abnormal rather than normal hemoglobin. Each parent has two separate copies of an allele at each “locus”, or location, on the chromosome, but each sperm or egg cell contains only one of these alleles. Thus a child has a 50% chance of receiving a particular allele from a particular parent. For example, suppose that at a given locus there are two possible alleles, A and B. If both parents are “heterozygous” at that locus, meaning they each have an A and a B allele (AB or BA—order is irrelevant), then a given offspring has a 25% chance of being “homozygous” for A (AA), a 25% chance of being homozygous for B (BB) and a 50% chance of being heterozygous (AB or BA). If an individual is heterozygous at a locus, a

“dominant” allele may impose itself on the “recessive” allele and the expression of the latter allele will not be observed.

Genes transcribe proteins that begin a cascade of interactions that regulate bodily structure and function. Many of the observable traits and behaviors of interest, referred to as “phenotypes”, are far downstream from the original “genotypes” present in the DNA. While in some cases one allele can single-handedly lead to a disease (such as Sickle Cell Anemia, Huntingtons disease, and cystic fibrosis), the vast majority of phenotypes are “polygenic”, meaning they are influenced by multiple genes (Mackay 2001, Plomin et al. 2008), and are shaped by a multitude of environmental forces. As a result, association models between genotypes and phenotypes are an important first step, but they are not the end of the story. It is also important to investigate the extent to which genetic associations are moderated by environmental factors and other genes.

## 4.2 *SLC6A4*, Serotonin, and Happiness

One strategy in behavioral genetics is to start with a “candidate” gene that is thought to influence behaviors or processes in the body that are related to the phenotype of interest. For subjective well-being, this means focusing on genes that affect brain development, neurotransmitter synthesis and reception, hormone regulation, and transcriptional factors (Damberg, Garpenstrand, Hallman and Oreland 2001, Benjamin et al. 2007).

We choose a candidate gene that has already received a great deal of attention for its association with mental states. The *SLC6A4* gene is critical to the metabolism of serotonin in the brain. As shown in Figure 1, serotonin is a chemical that is released by a neuron and sensed by a receptor on the receiving neuron, passing an electric potential across a gap called a nerve synapse (the nerve that emits the serotonin is on the “pre-synaptic” side of the gap). Signals are carried throughout the body by the sequential release of a neurotransmitter by one neuron after another across these synapses. The *SLC6A4* gene codes for the serotonin transporters (5-HTT or SERT) that are placed in the cell wall and

reabsorb the neurotransmitter serotonin from the synaptic cleft. Most serotonin is recycled after use and the serotonin transporter allows serotonergic neurons to restock. The serotonin transporter gene has been studied extensively and much is known about the way different versions of this gene influence serotonergic neurotransmission which, in turn, is found to influence personality and mental health (Hariri et al. 2002, Hariri and Holmes 2006, Canli and Lesch 2007).

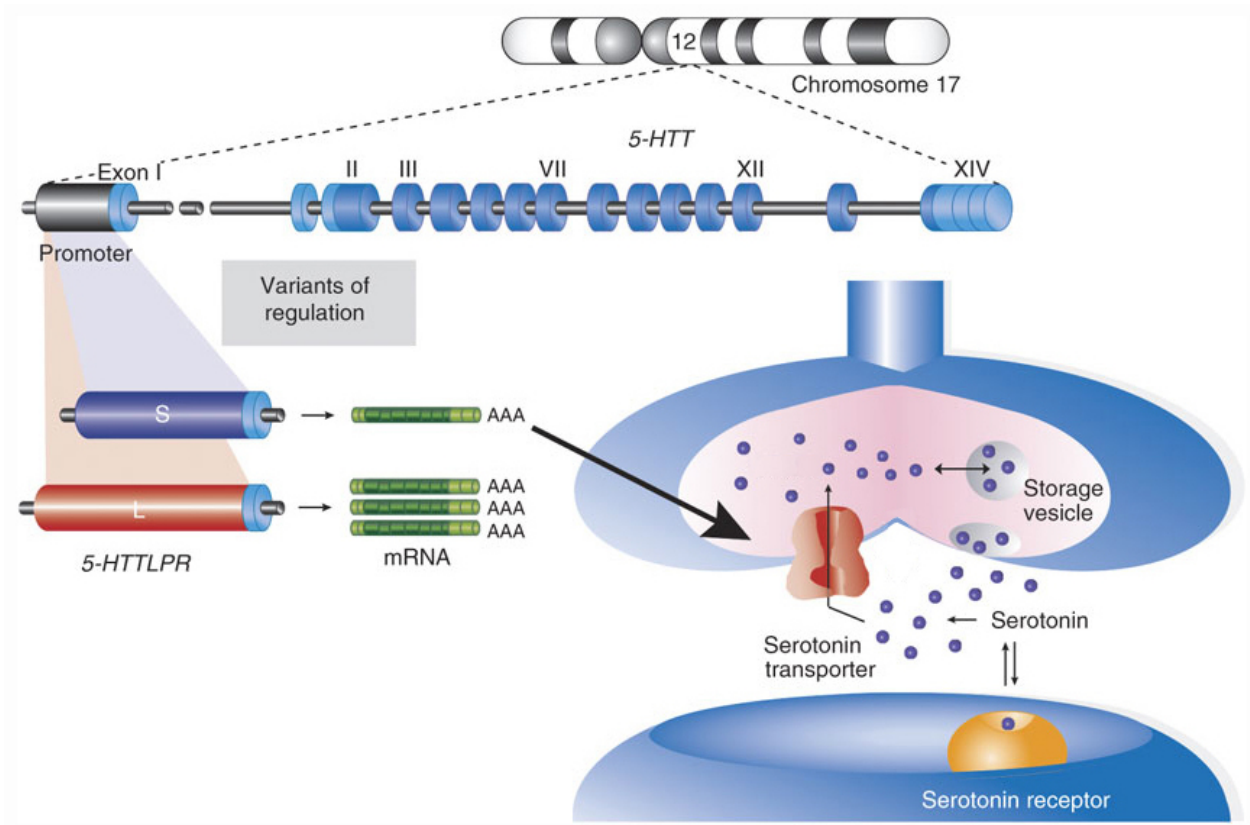


Figure 1: Representation of the long/short variant of the *SLC6A4* gene and the release, reception, and recycling of serotonin in neurons. Adapted from Canli & Lesch (2007), with permission from the Nature Publishing Group.

The *SLC6A4* gene contains a 44 base-pair variable-number tandem repeat (VNTR) polymorphism<sup>5</sup> in the promoter region<sup>6</sup>(5-HTTLPR) that is believed to be responsible for vari-

<sup>5</sup>A VNTR polymorphism is a repeated segment of DNA that varies among individuals in a population.

<sup>6</sup>A promoter region is the regulatory region of DNA that tells transcription enzymes where to begin.

ation in transcriptional efficiency. The “long” (528 bp) and “short” (484 bp) polymorphism produce the same protein but the long allele is associated with an approximately three times higher basal activity than the shorter allele. Consequently, the long variant produces significantly more 5-HTT mRNA<sup>7</sup> and protein (Lesch, Bengel, Heils, Sabol, Greenberg, Petri and et al. 1996, Little, McLaughlin, Zhang, Livermore, Dalack and McFinton 1998, Glatz, Mössner, Heils and Lesch 2003, Canli and Lesch 2007). The long polymorphism thus results in increased gene expression and more serotonin transporters in the cell membrane. In turn, more serotonin is reintroduced into the pre-synaptic cell. This process is also shown in Figure 1.

Functional variation in the serotonin transporter gene is increasingly understood to exert influence on parts of the brain regulated by serotonergic neurotransmission. In particular, research shows increased amygdala activation to negative emotional stimuli among carriers of short alleles (Hariri et al. 2002, Heinz et al. 2005, Munafò, Brown and Hariri 2008, Pezawas, Meyer-Lindenberg, Drabant, Verchinski, Munoz, Kolachana, Egan, Mattay, Hariri and Weinberger 2005, Canli, Omura, Haas, Fallgatter and Constable 2005). A morphometrical study of this genetic association reports reduced gray matter volume in short-allele carriers in limbic regions critical for processing of negative emotion, particularly perigenual cingulate and amygdala (Pezawas et al. 2005). These authors conclude that 5-HTTLPR induced variation in anatomy and function of an amygdala-cingulate feedback circuit critical for emotion regulation implicates a genetic susceptibility for depression (Pezawas et al. 2005). Another morphometrical study corroborates the finding that short-allele carriers show decreased volume in the affective division of the anterior cingulate and decreased gray matter density in its pregenual region (Canli et al. 2005). The same study also finds that the 5-HTTLPR polymorphism is associated with activation changes to positive stimuli, suggesting a general role in emotional regulation, rather than negative valence specifically (Canli et al. 2005).

---

These promoter regions typically lie upstream from the genes they control.

<sup>7</sup>Messenger ribonucleic acid (mRNA) is a type of RNA that carries information from DNA to ribosomes. In turn, these ribosomes “read” messenger RNAs and translate their information into proteins.

Myriad behavioral studies also suggest that serotonin and *SLC6A4* play an important role in emotional regulation (Heils, Teufel, Petri, Stober, Riederer, Bengel and Lesch 1996, Hariri et al. 2002, Hariri and Holmes 2006). Specifically, variance in 5-HTTLPR was found to be associated with variation in mental health outcomes (Lesch et al. 1996) and subsequent studies report that about 10% of the variance in anxiety-related traits depends on variation in serotonin transporters (Sen, Burmeister and Ghosh 2004, Risch and et al. 2009, Munafò, Clark and Flint 2005). A recent study by Fox et al. (2009) also suggests that 5-HTTLPR may influence optimism. The authors obtained DNA from about 100 participants and compared reaction times to pictures with positive, negative, and neutral emotional valence (replicating a common experiment in psychopathology research). The results show that individuals with the transcriptionally more efficient 5-HTTLPR alleles display a significant bias towards processing positive information and selectively avoiding negative information. This emotionally self-protective pattern does not obtain in individuals carrying one or both short alleles.

Not all studies show a direct relationship between a gene variant and a phenotype. Instead, developmental or concurrent environments may moderate an association between genes and phenotypes. A well-known study by Caspi et al. (2003) identifies a gene-environment interaction for the influence of life stress on depression. The authors find that individuals with short 5-HTTLPR alleles gene are more vulnerable to stress-induced depression. Among those individuals that had experienced a relatively large number of stressful life events, about 33% of the carriers of the less efficient short allele were cases of diagnosed depression as compared to only 17% of the individuals that carried both long alleles. Thus, in the Caspi et al. (2003) study the gene itself is not associated with depression. Rather, it is the combination of both gene and environment that yields a significant association. In this study we do not report on a gene-environment interaction, but the *direct* association between the number of long 5-HTTLPR alleles and life satisfaction. Future research may produce new insights from exploring how environmental factors moderate the association between 5-HTTLPR and happiness.



### 4.3 Association methods

Genetic association studies test whether an allele or genotype occurs more frequently within a group exhibiting a particular phenotype than those without the phenotype. However, a significant association can mean one of three things: (1) The allele itself influences subjective well-being; (2) the allele is in “linkage disequilibrium” with an allele at another locus that influences subjective well-being; or (3) the observed association is a false positive signal due to population stratification.<sup>8</sup>

Population stratification occurs because groups may have different allele frequencies due to their genetic ancestry. Subjective well-being in these groups may be the product of their environments, alleles other than the one of interest, or some unobserved reason. For example, two groups may not have mixed in the past for cultural reasons. Through the process of local adaptation or genetic drift these groups may develop different frequencies of a particular allele. At the same time, the two groups may also develop divergent behaviors that are not influenced by the allele but solely by the environment in which they live. Once these two groups mix in a larger population, simply comparing the frequency of the allele to the observed behavior would lead to a spurious association.

There are two main research designs employed in association studies, case-control designs and family-based designs. Case-control designs compare the frequency of alleles or genotypes among subjects that exhibit a phenotype of interest to subjects who do not. As a result, case-control designs are vulnerable to population stratification if either group is especially prone to selection effects. A typical way to control for this problem is to include controls for the race or ethnicity of the subject or to limit the analysis to a specific racial or ethnic group. Family-based designs eliminate the problem of population stratification by using family members, such as parents or siblings, as controls. Tests using family data compare

---

<sup>8</sup>Given our data, we cannot differentiate between 1 and 2. In order to do so we would need additional genetic information about loci in close proximity to the locus of interest. Thus, a significant association means that either a particular allele, or one likely near it on the same gene, significantly influences subjective well-being.

whether offspring exhibiting the trait receive a risk allele from their parents more often than would be expected by chance. This design is very powerful in minimizing type I error but also suffers from much lower power in detecting a true association. Xu and Shete (2006) show, based on extensive simulation work, that a case-control association study using mixed-effects regression analysis outperforms family-based designs in detecting an association while at the same time effectively limiting type I error.

To test for genetic association we employ a mixed-effects OLS regression model:<sup>9</sup>

$$Y_{ij} = \beta_0 + \beta_G G_{ij} + \beta_k Z_{kij} + U_j + \epsilon_{ij}$$

where  $i$  and  $j$  index subject and family respectively. For the *SLC6A4* gene,  $G = 2$  if the subject’s genotype is LL,  $G = 1$  for genotypes LS or SL, and  $G = 0$  if the subject’s genotype is SS (where L represents having a copy of a 528 base-pair “long” allele, and S represents having a copy of a 484 base-pair “short” allele).  $Z$  is a matrix of variables to control for the underlying population structure of the Add Health sample as well as potentially mediating factors such as age, gender, education, religiosity, marriage, job, welfare, or medication that may all influence subjective well-being. Finally, the variable  $U$  is a family random effect that controls for potential genetic and environmental correlation among family members, and  $\epsilon$  is an individual-specific error.

To control for the effects of the underlying population structure, we include indicator variables for whether a subject self-reported as Black, Hispanic, or Asian (base category is White). Following the policy of the United States Census, Add Health allows respondents to mark more than one race. Since this complicates the ability to control for stratification,

---

<sup>9</sup>The choice between OLS and ordered probit regression analysis rests on whether the categories of the life satisfaction are considered cardinal or ordinal. Economists typically consider these happiness scores as ordinal and have mainly opted for the ordered type of analysis. Psychologists and sociologists interpret happiness categories as cardinal and therefore use OLS. Ferrer-i-Carbonell and Frijters (2004) survey and test both empirical literatures to conclude that assuming cardinality or ordinality of happiness surveys makes little difference in studies where the dependent variable is measured at a single point in time. We opted for OLS, but other analyses using ordered probit reveal no meaningful differences in coefficients or significance.

we exclude these individuals ( $N = 117$ ), but a supplementary analysis including them yields substantively equal results.

#### 4.4 Association results

Table 2 shows the results of several specifications of the models to test the hypothesis that the 5-HTTLPR long allele is associated with subjective well-being. Each of these specifications includes variables for age, gender, and race to control for population stratification. *Model 1* shows that the long allele is significantly associated with increased life satisfaction ( $p = 0.012$ ). In Figure 2 we summarize the results for 5-HTTLPR by simulating first differences from the coefficient covariance matrix of *Model 1*. Holding all else constant and changing the 5-HTTLPR variant for all subjects from zero to one long allele would increase the reporting of being very satisfied with one’s life in this population by about 8.5%. Similarly, changing the 5-HTTLPR variant from zero to two long alleles would increase the reporting of being very satisfied by about 17.3%.

*Model 2* includes a number of socio-economic factors that are known to influence subjective well-being. In particular, having a job, education, marriage, divorce, religiosity, welfare assistance, and being on medication. This model also suggests that there is a statistically significant association ( $p = 0.005$ ) between the 5-HTTLPR long variant and the reporting of life satisfaction. Notice also that the coefficient actually increases a bit, suggesting that the association cannot be explained by a mediation effect this genotype may have on any other variables included in the model.<sup>10</sup>

Following Xu and Shete (2006), as a robustness test for population stratification, we also include *Model 3* that is a case-control association model for those subjects that uniquely identified themselves as being white. The coefficient on 5-HTTLPR and its p-value ( $p =$

---

<sup>10</sup>We also report the results of association tests with 5-HTTLPR for each of these socio-economic factors in the appendix. An association with medication is nearly significant ( $p = 0.08$ ) but loses its significance ( $p = 0.17$ ) when controlling for age, gender, and race. Hence, medication cannot be considered a mediating variable (Baron and Kenny 1986).

	<i>Model 1</i>			<i>Model 2</i>			<i>Model 3</i>		
	Coeff.	<i>SE</i>	P-value	Coeff.	<i>SE</i>	P-value	Coeff.	<i>SE</i>	P-value
5-HTTLPR long	0.059	0.023	0.012	0.065	0.023	0.005	0.070	0.029	0.017
Black	-0.111	0.048	0.021	-0.114	0.049	0.020			
Hispanic	0.198	0.117	0.092	0.216	0.118	0.067			
Asian	-0.196	0.073	0.007	-0.221	0.071	0.002			
Age	0.004	0.009	0.705	-0.011	0.009	0.262	-0.031	0.012	0.008
Male	0.014	0.033	0.682	0.028	0.033	0.406	0.039	0.041	0.341
Job				0.093	0.041	0.024	0.104	0.057	0.071
College				0.115	0.033	0.001	0.238	0.042	0.000
Married				0.232	0.041	0.000	0.318	0.050	0.000
Divorced				-0.313	0.153	0.041	-0.310	0.155	0.047
Religiosity				0.103	0.017	0.000	0.082	0.023	0.000
Welfare				-0.236	0.098	0.017	-0.121	0.153	0.432
Medication				-0.045	0.032	0.162	-0.095	0.041	0.021
Intercept	4.078	0.208	0.000	4.096	0.210	0.000	4.514	0.262	0.000
<i>N</i>	2545			2528			1446		
<i>R</i> <sup>2</sup>	0.01			0.06			0.08		

Table 2: OLS models of association between 5-HTTLPR and life satisfaction. Variable definitions are in the Appendix. Standard errors (SE) and P-values are also presented.

0.017) suggest that population stratification between self-reported racial categories is not driving the association between 5-HTTLPR and life satisfaction.

## 5 Replication: The Framingham Heart Study

Specific genotypes usually only account for a very small amount of the variance in complex social behaviors, which means the tests often have low power. As a result, it is very important to replicate results in independent samples. Here, we utilize the Framingham Heart Study (FHS), a population-based, longitudinal, observational cohort study that was initiated in 1948 to prospectively investigate risk factors for cardiovascular disease. Since then, the FHS has come to be composed of four separate but related cohort populations: (1) the Original Cohort enrolled in 1948 (N=5,209); (2) the Offspring Cohort (the children of the

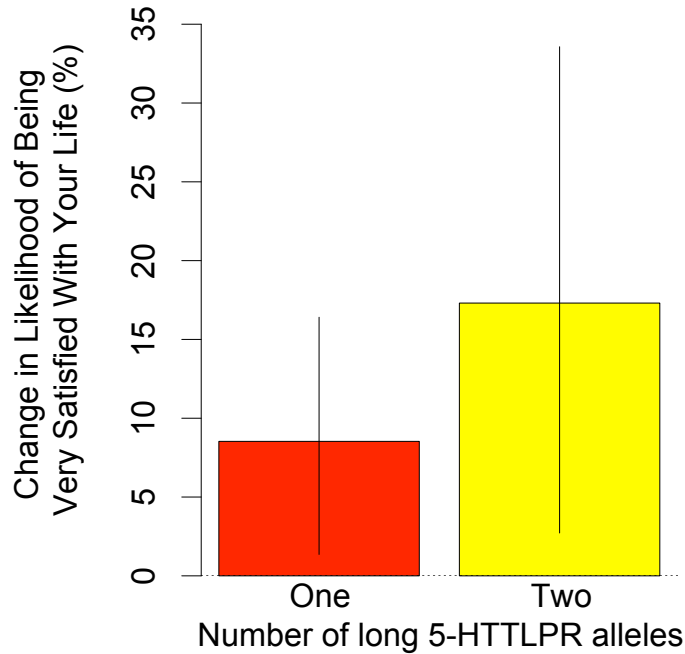


Figure 2: Increasing the number of “long,” more efficient 5-HTTLPR alleles yields significantly higher life satisfaction. First differences, based on simulations of *Model 1* parameters, are presented along with 95% confidence intervals. All other variables are held at their means.

Original Cohort and spouses of the children) enrolled in 1971 (N=5,124); (3) the Omni Cohort enrolled in 1994 (N=508); and (4) the Generation 3 Cohort (the grandchildren of the Original Cohort) enrolled beginning in 2002 (N=4,095). Published reports provide details about sample composition and study design for all these cohorts (Cupples and D’Agostino 1988, Kannel, Feinleib, McNamara, Garrison and Castelli 1979).

The Framingham Heart Study makes available genetic markers for its participants. Out of the 14,428 members of the three main cohorts, a total of 9,237 individuals have been genotyped (4,986 women and 4,251 men) for single nucleotide polymorphisms (SNPs). These are specific locations on human DNA where a single pair of nucleotides varies for some part of the human population. FHS makes available a data set of expected genotypes for all 2,543,887 SNPs in the European ancestry HapMap sample that was computed from the 550,000 observed SNPs from an Affymetrix array using the program MACH (for information

on how this data set was constructed, see de Bakker (n.d.)). Although this data does not contain the same VNTR polymorphism marker for *SLC6A4* that we analyze in Add Health, it does contain a nearby marker called “rs2020933”, and the “A” allele of this marker is associated with higher transcriptional efficiency of serotonin transporters (Martin, Cleak, Willis-Owen, Flint and Shifman 2007, Wendland, Martin, Kruse, Lesch and Murphy 2006, Lipsky, Hu and Goldman 2009, Fahad, Vasiliou, Haddley, Paredes, Roberts, Miyajima, Klenova, Bubb and Quinn 2010). It is also known to be in positive linkage disequilibrium with the long allele of 5-HTTLPR (Huezo-Diaz, Rietschel, Henigsberg, Marusic, Mors, Maier, Hauser, Souery, Placentino, Zobel, Larsen, Czerski, Gupta, Hoda, Perroud, Farmer, Craig, Aitchison and McGuffin 2009).

The FHS also asked 3,460 participants in the offspring cohort a variant of the life satisfaction question: “Indicate where you think you belong between these two extremes ... satisfied with job or home life OR ambitious, want change.” Respondents were given a 7 point scale to choose from, and we reverse coded the scale so that higher values indicated greater satisfaction with life (mean=4.7, SD=1.7). Although this question is not exactly like the one asked in Add Health, if there is a real association between *SLC6A4* and happiness, we expect it to show up in spite of variations in the way the question is asked.

We merged the gene and life satisfaction data and conducted an association test using a linear regression with a general estimating equations (GEE) approach to account for within-family correlation of errors. As shown in Model 1 in Table 3, this association is significant ( $p = 0.05$ ) and in the expected direction. In Model 2 we include additional controls for age and gender. We also include the first ten principal components of a singular value decomposition of the subject-genotype matrix in the regression (see Appendix), which has been shown to effectively control for population stratification (Price, Patterson, Plenge, Weinblatt, Shadick and Reich 2006). Once again, the replicated association is significant ( $p = 0.05$ ).

	<i>Model 1</i>			<i>Model 2</i>		
<b>rs2020933 “A” alleles</b>	<b>0.22</b>	<b>0.11</b>	<b>0.05</b>	<b>0.21</b>	<b>0.11</b>	<b>0.05</b>
Age				0.04	0.00	0.00
Male				-0.00	0.06	0.99
Principal Component 1				-0.88	1.57	0.58
Principal Component 2				0.04	6.43	0.99
Principal Component 3				-3.32	2.21	0.13
Principal Component 4				-1.08	2.33	0.64
Principal Component 5				-3.30	2.64	0.21
Principal Component 6				1.13	2.45	0.65
Principal Component 7				2.21	1.97	0.26
Principal Component 8				-2.10	2.21	0.34
Principal Component 9				-0.52	2.06	0.80
Principal Component 10				-1.82	2.26	0.42
Intercept	4.68	0.04	0.00	2.90	0.16	0.00
<i>N</i>	2843			2831		
<i>R</i> <sup>2</sup>	0.01			0.05		

Table 3: GEE models of association between rs2020933 and life satisfaction. Variable definitions are in the Appendix. Standard errors (*SE*) and P-values are also presented.

## 6 Discussion

The main goal of this paper is to provide empirical evidence that genes matter for subjective well-being and to encourage economists to consider the importance of biological differences. The results we present here address one possible source of the “baseline” or “set point” for happiness that prior work has identified (Kahneman et al. 1999, Graham 2008). The existence of a baseline does not mean that the socio-economic influences on happiness so far identified by researchers are unimportant. Rather, our results complement these studies and suggest a new direction for research. As indicated by the  $R^2$  value in Table 2, the *SLC6A4* gene explains less than one percent of the variation in life satisfaction but our twin analysis suggests that *all* genes account for about a third of the total variance. Therefore, there are probably many other genes which, in conjunction with environmental factors, help to explain how baseline happiness varies from one person to another. The association with *SLC6A4* is

probably the first of a number of associations that will likely be identified over the course of the next few years.

While the Add Health study presents us with a valuable opportunity to explore a genetic basis of subjective well-being, we want to emphasize a limitation of the data. The Add Health sample is restricted to individuals who are 18-26 years old during Wave III, so our results apply only to the subjective well-being of young adults and not to people in different age categories. However, the strong similarity in the distribution of answers in the Add Health data as compared to other life satisfaction surveys used in the happiness literature suggests that the age limits are not likely to gravely distort our results (Di Tella et al. 2001, Di Tella et al. 2003, Kahneman and Krueger 2006, Frey 2008). Moreover, our successful replication in the Framingham Heart Study, which has a much wider age range, further suggests a degree of generalizability.

A second important limitation is that we use a case-control method that is vulnerable to population stratification. Because of limited mobility, local adaptation, and genetic drift, it is possible that people from different cultures have a different incidence of certain genotypes, which could lead to a spurious association between genotype and cultural attributes. We limit this potential threat to the validity of our results by including controls for race and limiting the analysis to a specific racial or ethnic group in Add Health. Moreover, we successfully replicate a related association in the Framingham Heart Study that controls for the first ten principal components of a singular value decomposition of the subject-genotype matrix, which has been shown to effectively deal with the problem of population stratification (Price et al. 2006).

The estimates of the influence of socio-demographic, economic, and cultural covariates on life satisfaction in Table 2 corroborate the generally identified systematic effects of these variables in the literature (for a survey, see Dolan et al. (2008)). In particular, gender does not systematically affect happiness. Higher age has a negative, though not statistically significant effect (this is not surprising considering that our sample refers to young adults).



African Americans and Asian Americans are systematically less happy than are Whites, while Latinos are somewhat happier, but not in a statistically significant way. Better educated and married individuals report having significantly higher life satisfaction, while divorced people are more unhappy. Having a job strongly raises life satisfaction. This reflects the psychic benefits of being occupied and integrated into society. At the same time it suggests that having an income raises life satisfaction. In contrast, persons on welfare are much less happy than those employed which reflects the psychic costs of unemployment. Religious individuals are significantly more happy than those without religious beliefs. Persons with less good health, as measured by the need to be on medication, are also less happy. As is the case with most research on happiness, these estimates identify correlations, not causality, given the difficulty in disentangling endogeneity. Once again, consistency with previous studies suggests that results using the Add Health data may generalize to other populations and a wider demography in terms of age.

The life satisfaction question and answer formulation used in Add Health is standard in the economics and psychology literatures (Diener and Diener 1996, Di Tella et al. 2001, Kahneman and Krueger 2006, Frey 2008). This question has been cross-validated with alternative measures that gauge subjective well-being (Kahneman and Krueger 2006, Bartels and Boomsma 2009) and Oswald and Wu (2010) provide objective confirmation of life satisfaction as a measure of subjective well-being. Still, the life satisfaction question has been criticized for inducing a focussing illusion by drawing attention to people's relative standing rather than moment-to-moment hedonic experience (Kahneman, Krueger, Schkade, Schwarz and Stone 2006).

## 7 Conclusion

Our results suggest that genetic factors significantly influence individual subjective well-being. In fact, using twin study techniques we estimate that genetics explains about 33% of the variance in individual happiness. Moreover, using alternative methods we have identi-

fied one particular gene—*SLC6A4*—as having a positive association with self-reported life satisfaction in two independent samples. By moving beyond a twin study and focusing on specific genes, our analysis is able to suggest potential causal pathways through which genes influence happiness levels. A significant body of research has shown that the serotonin transporter gene influences the human psyche via its impact on neurological processes, thereby establishing a potential causal chain leading from this genotype to self-reported life satisfaction. Given prior research linking the “short,” less transcriptionally efficient alleles of the *SLC6A4* gene to mood disorders, and the “long,” more efficient alleles to optimism bias, we hypothesized that carriers of the “long” alleles would be more likely to report being happy, and this intuition is supported in both the Add Health and Framingham Heart Study data. The causal structure must be further studied once additional data reporting the genetic endowment of individuals coupled with data on their subjective well-being become available.

We have stressed that genetic factors complement, rather than substitute for, the existing studies showing the influence of socio-demographic, economic and cultural variables on life satisfaction. This study seeks to show the combined influences of biological and environmental influences on subjective well-being; but it is only a beginning and may open up a fascinating new research frontier. Future work should attempt to identify other genes or gene-environment interactions that are implicated in subjective well-being. Finding out which genes they are and what physical function they have will improve our understanding of the biological processes that underlie well-being and may also shed light on their evolutionary origin (Fitzpatrick, Ben-Shahar, Smid, Vet, Robinson and Sokolowski 2005). While the *SLC6A4* gene may explain a significant portion of the variation in happiness, it is important to re-emphasize that there is no single “happiness gene.” Instead, there is likely to be a set of genes whose expression, in combination with environmental factors, influences subjective well-being.

More broadly, these results suggest a tentative new step forward for economics as a discipline. They show that integrating the unique biology of each individual, in addition to

studying experience and environment may usefully complement existing models and up their explanatory power (Caplin and Dean 2008). We also believe that genetic association studies such as ours may be a new catalyst for two important lines of research. First, economics places a high premium on causal inference. Provided that robust genetic associations are available and that exclusion restrictions are met, genotypes could function as instrumental variables to disentangle the reverse causality in important relationships that have been plagued by endogeneity. First attempts at using genes as instruments have been tried on the link between health and educational attainment (Fletcher and Lehrer 2009, Norton and Han 2009, von Hinke Kessler Scholder, Smith, Lawlor, Propper and Windmeijer 2010). We foresee this to be an exciting new avenue in economic research and we will also turn our attention to estimating the causal influence of happiness on a number of important economic variables such as health and income using *SLC6A4* genotypes as instrumental variables. Second, integrating genetic variation and neuroscientific research may further advance our understanding of the biological underpinnings of individual behavior. For example, the work by Urry et al. (2004) presents neural correlates of subjective well-being. Some of the neurological variation they observe may result from differences in genotype and could thus inform and stimulate new candidate gene association studies. Since genes are upstream from neurological processes, understanding them may bring us closer to understanding the objective sources of subjective well-being.

## Appendix

### Variable Definitions

*5-HTTLPR long* is an variable for having 0, 1, or 2 of the 528 base-pair alleles of the *SLC6A4* gene (as opposed to the 484 base-pair version). The *race/ethnicity* indicator variables are based on the questions “Are you of Hispanic or Latino origin?” and “What is your race? [white/black or African American/American Indian or Native American/Asian or Pacific Islander]”. *Age* is self-reported age and *Male* is an indicator taking the value of 1 if the respondent is a male and 0 for a female. *Job* is the response to the question “Do you currently have a job?” *College* is an indicator variable taking the value 1 if the respondent completed at least one year of college and 0 for no college. It is based on the question “What is the highest grade or year of regular school you completed?” *Married* and *Divorced* are dummies derived from the population subset that have married and answered “Are you still married?” *Religiosity* relies on “To what extent are you a religious person?” and takes a value between 0 and 3 for very religious. *Welfare* is a dummy for “Are you receiving welfare?” *Medication* is a dummy for “In the past 12 months, have you taken any prescription medication—that is, a medicine that must be prescribed by a doctor or nurse?” *DRD4* is the number of r7 alleles (0, 1, or 2) as opposed to r4 alleles. *DRD2* is the number of a2 alleles (0, 1, or 2) as opposed to a1 alleles. *DAT1* is the number of r9 alleles (0, 1, or 2) as opposed to r10 alleles. *MAOA* is the number of “High” alleles (0, 1, or 2) as opposed to “Low” alleles. *rs2304297* is the number of G alleles (0, 1, or 2) for this SNP on *CHRNA6* (as opposed to C alleles). *rs892413* is the number of C alleles (0, 1, or 2) for this SNP on *CHRNA6* (as opposed to A alleles). *rs4950* is the number of G alleles (0, 1, or 2) for this SNP on *CHRN3* (as opposed to A alleles). *rs13280604* is the number of G alleles (0, 1, or 2) for this SNP on *CHRN3* (as opposed to A alleles). *rs2020933* is the number of A alleles (0, 1, or 2) for this SNP on *SLC6A4* (as opposed to T alleles).

*Principal Component 1-10* is the individual loading for each individual on the 10 principal components associated with the 10 largest eigenvalues of a singular value decomposition of

the subject-genotype matrix. These 10 values contain information about population structure, so including them in an association test helps to control for population stratification (Price et al. 2006). Because principal component analysis assumes independent observations, we did not use our entire (family-based) FHS sample to construct the principal components. Instead we used a subsample of 2,507 unrelated individuals to calculate the principal components of the genotypic data and then projected the other individuals in the sample onto those principal components, thus obtaining the loadings of each individual on each of the top 10 principal components.

Table 4: ACE twin models of life satisfaction, by gender

Life satisfaction (females)				<i>Fit statistics</i>						
	$a^2$	$c^2$	$e^2$	ep	-2ll	df	AIC	diff -2ll	diff df	p
ACE	0.205	0.050	0.745	4	919.8	388	143.8	-	-	-
AE	0.263	-	0.737	3	919.8	389	141.8	0.05	1	0.83
CE	-	0.205	0.795	3	920.3	389	142.3	0.53	1	0.47
E	-	-	1	2	928.0	390	148.0	8.24	2	0.02

Life satisfaction (males)				<i>Fit statistics</i>						
	$a^2$	$c^2$	$e^2$	ep	-2ll	df	AIC	diff -2ll	diff df	p
ACE	0.389	0.000	0.611	4	951.3	400	151.3	-	-	-
AE	0.389	-	0.611	3	951.3	401	149.3	0	1	1
CE	-	0.308	0.692	3	955.0	401	153.0	3.73	1	0.05
E	-	-	1	2	972.4	402	168.4	21.11	2	0

Figure 3: Longitudinal cross-twin correlations

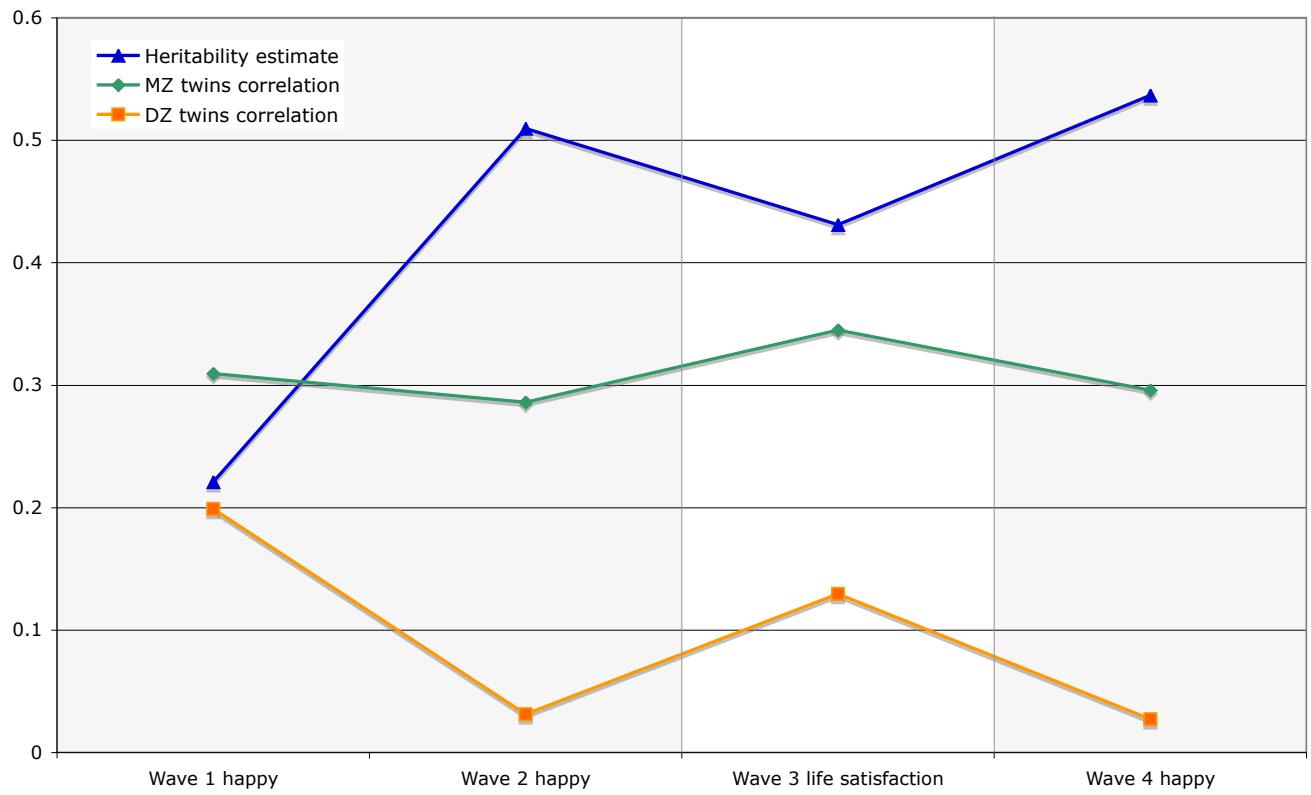


Table 5: OLS models of association between 5-HTTLPR and life satisfaction that include all available Add Health genetic markers. Standard errors (SE) and P-values are also presented.

	<i>Model 1</i>			<i>Model 2</i>			<i>Model 3</i>		
	Coeff.	<i>SE</i>	P-value	Coeff.	<i>SE</i>	P-value	Coeff.	<i>SE</i>	P-value
5-HTTLPR: long	0.061	0.026	0.021	0.066	0.025	0.009	0.080	0.032	0.011
MAOA: high	-0.014	0.022	0.518	-0.020	0.021	0.336	-0.017	0.027	0.528
DRD4: r7	-0.000	0.033	0.993	0.001	0.032	0.970	0.024	0.039	0.548
DRD2: a2	0.008	0.030	0.777	-0.000	0.029	0.991	0.048	0.036	0.243
DAT1: r10	0.043	0.032	0.169	0.045	0.030	0.135	0.047	0.036	0.191
rs2304297: G	-0.028	0.061	0.647	-0.012	0.059	0.842	0.018	0.085	0.837
rs892413: C	-0.010	0.051	0.837	-0.024	0.050	0.628	-0.024	0.073	0.744
rs4950: G	-0.042	0.065	0.520	-0.039	0.062	0.528	0.006	0.077	0.939
rs13280604: G	0.066	0.065	0.035	0.036	0.061	0.555	0.013	0.073	0.863
Black	-0.138	0.065	0.035	-0.150	0.065	0.020			
Hispanic	0.294	0.160	0.067	0.256	0.147	0.081			
Asian	-0.205	0.083	0.014	-0.250	0.079	0.002			
Age	0.006	0.010	0.581	-0.009	0.010	0.390	-0.027	0.013	0.033
Male	0.046	0.037	0.212	0.061	0.037	0.097	0.039	0.046	0.384
Job				0.108	0.046	0.019	0.104	0.057	0.071
College				0.154	0.037	0.000	0.245	0.048	0.000
Married				0.218	0.048	0.000	0.259	0.057	0.000
Divorced				-0.285	0.154	0.065	-0.265	0.159	0.096
Religiosity				0.160	0.020	0.000	0.131	0.026	0.000
Welfare				-0.205	0.112	0.068	-0.100	0.165	0.546
Medication				-0.072	0.037	0.053	-0.129	0.046	0.005
Intercept	3.960	0.246	0.000	3.932	0.243	0.000	4.227	0.304	0.000
<i>N</i>	1939			1910			1110		
<i>R</i> <sup>2</sup>	0.015			0.087			0.102		



## Summary Statistics

Table 6: Sample means.

	Mean	Std Dev	Min	Max
Life satisfaction	4.20	0.79	1	5
5-HTTLPR long	1.14	0.72	0	2
Age	21.9	1.7	18	26
Religiosity	1.43	0.92	0	3

Table 7: Percentage of subjects exhibiting these characteristics.

	Percent
White	70.9
Black	19.0
Hispanic	14.7
Asian	8.2
Male	47.8
College	54.9
Married	17.3
Divorced	1.4
Welfare	4.2
Medication	61.2

Figure 4: Distribution of life satisfaction

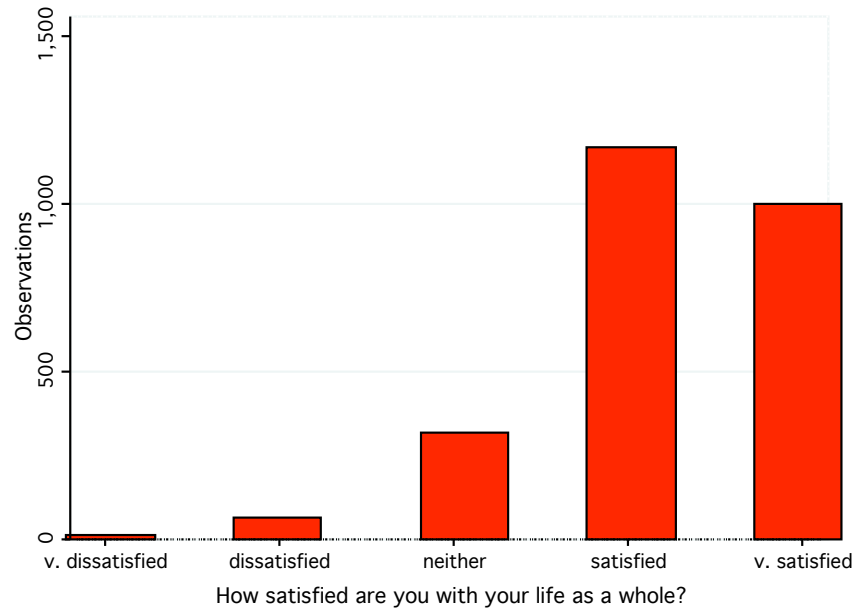


Figure 5: Distribution of life satisfaction, by zygosity

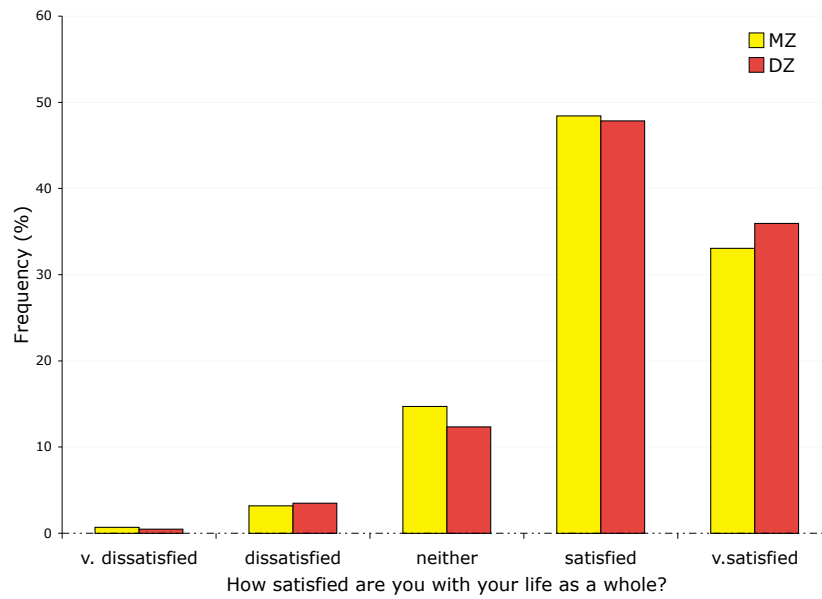


Table 8: Cross-tabs

Life satisfaction	5-HTTLPR long			Total
	0	1	2	
Very dissatisfied	4 <i>(0.8%)</i>	4 <i>(0.3%)</i>	5 <i>(0.6%)</i>	13 <i>(0.5%)</i>
Dissatisfied	17 <i>3.3%</i>	35 <i>2.9%</i>	13 <i>1.6%</i>	65 <i>2.6%</i>
Neither	72 <i>14.2%</i>	149 <i>12.6%</i>	97 <i>11.3%</i>	318 <i>12.4%</i>
Satisfied	226 <i>44.4%</i>	544 <i>45.9%</i>	394 <i>45.7%</i>	1,164 <i>45.6%</i>
Very satisfied	190 <i>37.3%</i>	453 <i>38.2%</i>	353 <i>41.0%</i>	996 <i>39.0%</i>
Total	509 <i>100%</i> <i>(20%)</i>	1,185 <i>100%</i> <i>(46%)</i>	862 <i>100%</i> <i>(34%)</i>	2,556 <i>100%</i>

Table 9: Life satisfaction and genotype, by race

Race		Mean
White	Life satisfaction	4.24
	5-HTTLPR long	1.12
Black	Life satisfaction	4.13
	5-HTTLPR long	1.47
Hispanic	Life satisfaction	4.22
	5-HTTLPR long	0.93
Asian	Life satisfaction	4.01
	5-HTTLPR long	0.69

## Potential Mediators

DV	<i>5-HTTLPR long</i> <i>p - value</i>
Job	0.17
College	0.99
Married	0.33
Divorced	0.16
Religiosity	0.48
Welfare	0.25
Medication	0.08

Table 10: Table presents  $p$  values for 5HTT long in models with job, college attendance, married, divorced, religious, welfare, and medication as dependent variables. Regressions also include race, age, and gender controls.

## **Acknowledgment**

This research uses data from Add Health, a program project directed by Kathleen Mullan Harris and designed by J. Richard Udry, Peter S. Bearman, and Kathleen Mullan Harris at the University of North Carolina at Chapel Hill, and funded by grant P01-HD31921 from the Eunice Kennedy Shriver National Institute of Child Health and Human Development, with cooperative funding from 23 other federal agencies and foundations. Special acknowledgment is due Ronald R. Rindfuss and Barbara Entwisle for assistance in the original design. Information on how to obtain the Add Health data files is available on the Add Health website (<http://www.cpc.unc.edu/addhealth>). No direct support was received from grant P01-HD31921 for this analysis.

## References

- Add Health Biomarker Team**, “Biomarkers in Wave III of the Add Health Study,” 2007. <http://www.cpc.unc.edu/projects/addhealth/files/biomark.pdf>.
- Alcott, H., D. Karlan, M. Mobius, T. Rosenblat, and A. Szeidl**, “Community Size and Network Closure,” *American Economic Review*, 2007, *97* (2), 80–85.
- Baron, R.M. and D.A. Kenny**, “The moderator-mediator variable distinction in social psychological research: Conceptual, strategic, and statistical considerations,” *Journal of Personality and Social Psychology*, 1986, *51* (6), 1173–1182.
- Bartels, Meike and Dorret I. Boomsma**, “Born to be Happy? The Etiology of Subjective Well-Being,” *Behavior Genetics*, 2009, *39* (6), 605–615.
- Benjamin, Daniel J., Christopher F. Chabris, Edward L. Glaeser, Vilmundur Gudnason, Tamara B. Harris, David I. Laibson, Lenore Launer, and Shaun Purcell**, “Genoeconomics,” in Maxine Weinstein, James W. Vaupel, and Kenneth W. Wachter, eds., *Biosocial Surveys*, The National Academies Press: Washington, D.C., 2007.
- Bertolino, A., G. Arciero, V. Rubino, V. Latorre, M. De Candia, and V. Mazzola**, “Variation of human amygdala response during threatening stimuli as a function of 5HTTLPR genotype and personality style,” *Biological Psychiatry*, 2005, *57* (12), 1517–1525.
- Bouchard, T.J.**, “Genetic and Environmental Influences on Adult Intelligence and Special Mental Abilities,” *Human Biology*, 1998, *70* (2), 257–279.
- Canli, T., K. Omura, B. W. Haas, A. Fallgatter, and R. T. Constable**, “Beyond affect: a role for genetic variation of the serotonin transporter in neural activation during a cognitive attention task,” *Proceedings of the National Academy of Sciences USA*, 2005, *102*, 12224–12229.
- Canli, Turhan and Klaus-Peter Lesch**, “Long story short: the serotonin transporter in emotion regulation and social cognition,” *Nature Neuroscience*, 2007, *10* (9), 1103–1109.
- Caplin, Andrew and Mark Dean**, “Dopamine, Reward Prediction Error, and Economics,” *Quarterly Journal of Economics*, 2008, *123* (2), 663–701.
- Caspi, A., K. Sugden, T. Moffitt, A. Taylor, I. Craig, H. Harrington, J. McClay, J. Mill, J. Martin, A. Braithwaite, and R. Poulton**, “Influence of Life Stress on Depression: Moderation by a Polymorphism in the 5-HTT Gene,” *Science*, July 2003, *301*, 386–389.

- Cesarini, David, Christopher T. Dawes, M. Johannesson, P. Lichtenstein, and B. Wallace**, “Genetic Variation in Preferences for Giving and Risk-Taking,” *Quarterly Journal of Economics*, 2009, *124* (2), 809–842.
- Clark, Andrew E. and Andrew J. Oswald**, “Satisfaction and Comparison Income,” *Journal of Public Economics*, 1996, *61* (3), 359–381.
- , **Paul Frijters, and Michael A. Shields**, “Relative Income, Happiness, and Utility: An Explanation for the Easterlin Paradox and Other Puzzles,” *Journal of Economic Literature*, 2008, *46* (1), 95–144.
- Cupples, L.A. and R.B. D’Agnostino**, “Survival following initial cardiovascular events: 30 year follow-up,” in W. B. Kannel, P. A. Wolf, and R. J. Garrison, eds., *The Framingham Study: An epidemiological investigation of cardiovascular disease*, National Heart, Lung and Blood Institute, Bethesda, MD, 1988, pp. 88–2969.
- Damberg, M., H. Garpenstrand, J. Hallman, and L. Oreland**, “Genetic mechanisms of behavior: don’t forget about the transcription factors,” *Molecular Psychiatry*, 2001, *6* (5), 503–510.
- de Bakker, Paul**, “Imputation in the Framingham Heart Study.”
- Di Tella, Rafeal and Robert MacCulloh**, “Some Uses of Happiness Data in Economics,” *Journal of Economic Perspectives*, 2006, *20*, 25–46.
- , —, and **Andrew Oswald**, “Preferences over Inflation and Unemployment: Evidence from Surveys of Happiness,” *American Economic Review*, 2001, *91* (1), 335–341.
- , —, and —, “The Macroeconomics of Happiness,” *Review of Economics and Statistics*, 2003, *85* (4), 809–827.
- Diener, E. and R. Lucas**, “Personality and subjective well-being,” in D. Kahneman, E. Diener, and N. Schwarz, eds., *Well-being: The foundations of hedonic psychology*, New York, NY: Sage, 1999.
- Diener, Ed and Carol Diener**, “Most People Are Happy,” *Psychological Science*, 1996, *7* (3), 181–185.
- Dolan, P., T. Peasgood, and M.P. White**, “Do we really know what makes us happy? A review of the economic literature on the factors associated with subjective well-being,” *Journal of Economic Psychology*, 2008, *29* (94-122).
- Easterlin, Richard**, “Does Economic Growth Improve the Human Lot? Some Empirical Evidence,” in P. David and M. Reder, eds., *Nations and Households in Economic Growth: Essays in Honour of Moses Abramowitz*, Academic Press, 1974.

- Echenique, F., R. G. Fryer, and A. Kaufman**, “Is School Segregation Good or Bad?,” *American Economic Review*, 2006, *96* (2), 265–269.
- Echenique, Federico and Roland G. Fryer**, “A Measure of Segregation Based on Social Interactions,” *Quarterly Journal of Economics*, 2007, *122* (2), 441–485.
- Fahad, Ali R, Sylvia A Vasiliou, Kate Haddley, Ursula M Paredes, Julian C Roberts, Fabio Miyajima, Elena Klenova, Vivien J. Bubb, and John Quinn**, “Combinatorial interaction between two human serotonin transporter gene variable number tandem repeats and their regulation by CTCF,” *Journal of Neurochemistry*, 2010, *112* (1), 296–306.
- Ferrer-i-Carbonell, Ada and Paul Frijters**, “How Important is Methodology for the Estimates of the Determinants of Happiness,” *The Economic Journal*, 2004, *114* (July), 641–659.
- Fitzpatrick, M.J., Y. Ben-Shahar, H.M. Smid, L.E.M. Vet, G.E. Robinson, and M.B. Sokolowski**, “Candidate genes for behavioural ecology,” *Trends in Ecology and Evolution*, 2005, *20* (2), 96–104.
- Fletcher, Jason and Steven Lehrer**, “Using Genetic Lotteries within Families to Examine the Causal Impact of Poor Health on Academic Achievement,” 2009. Prepared for the Annual Meeting of the American Economic Association.
- Fowler, James H. and Nicholas A. Christakis**, “Dynamic Spread of Happiness in a Large Social Network: Longitudinal Analysis Over 20 Years in the Framingham Heart Study,” *British Medical Journal*, 2008, *337* (2338), 1–9.
- , **Laura A. Baker, and Christopher T. Dawes**, “Genetic Variation in Political Participation,” *American Political Science Review*, 2008, *101* (2), 233–248.
- Fox, Elaine, Anna Ridgewell, and Chris Ashwin**, “Looking on the bright side: biased attention and the human serotonin transporter gene,” *Proceedings of the Royal Society B*, 2009, *276*, 1747–1751.
- Frey, Bruno S.**, *Happiness: A Revolution in Economics*, MIT Press, 2008.
- and **Alois Stutzer**, *Happiness and Economics: How the Economy and Institutions Affect Well-Being*, Princeton University Press, 2002.
- and —, “What Can Economists Learn from Happiness Research?,” *Journal of Economic Literature*, 2002, *40* (2), 402–435.
- Glatz, K., R. Mössner, A. Heils, and K.P. Lesch**, “Glucocorticoid-regulated human serotonin transporter (5-HTT) expression is modulated by the 5-HTT gene-promotor-linked polymorphic region,” *J. Neurochem.*, 2003, *85* (5), 1072–1078.



- Graham, Carol**, “Economics of Happiness,” in Steven N. Durlauf and Lawrence E. Blume, eds., *The New Palgrave Dictionary of Economics*, Palgrave Macmillan, 2008.
- and **Stefano Pettinato**, *Happiness and Hardship: Opportunity and Insecurity in New Market Economics*, Brookings Institution Press, 2002.
- Hariri, A.R. and A. Holmes**, “Genetics of emotional regulation: the role of the serotonin transporter in neural function,” *Trends Cognitive Science*, 2006, *10*, 182–191.
- , **V.S. Mattay, A. Tessitore, B. Kolachana, F. Fera, and D. Goldman**, “Serotonin transporter genetic variation and the response of the human amygdala,” *Science*, 2002, *297* (5580), 400–403.
- Harris, Kathleen Mullan, Carolyn Tucker Halpern, Andrew Smolen, and Brett C. Haberstick**, “The National Longitudinal Study of Adolescent Health (Add Health) Twin Data,” *Twin Research and Human Genetics*, 2006, *9* (6), 988–997.
- Heils, A., A. Teufel, S. Petri, G. Stober, P. Riederer, D. Bengel, and K.P. Lesch**, “Allelic Variation of Human Serotonin Transporter Gene Expression,” *J. Neurochem.*, 1996, *66* (6), 2621–2624.
- Heinz, A., D. Braus, M. Smolka, J. Wrase, I. Puls, D. Hermann, and et al.**, “Amygdala-prefrontal coupling depends on a genetic variation of the serotonin transporter,” *Nat Neurosci*, 2005, *8* (1), 20–21.
- Huezo-Diaz, Patricia, Marcella Rietschel, Neven Henigsberg, Andrej Marusic, Ole Mors, Wolfgang Maier, Joanna Hauser, Daniel Souery, Anna Placentino, Astrid Zobel, Erik Roj Larsen, Piotr M. Czerski, Bhanu Gupta, Farzana Hoda, Nader Perroud, Anne Farmer, Ian Craig, Katherine J. Aitchison, and Peter McGuffin**, “Moderation of antidepressant response by the serotonin transporter gene,” *British Journal of Psychiatry*, 2009, *195*, 30–38.
- Jacobson, K.C. and D.C. Rowe**, “Genetic and Shared Environmental Influences on Adolescent BMI: Interactions with Race and Sex,” *Behavior Genetics*, 1998, *28* (4), 265–278.
- Kahneman, Daniel, Alan B. Krueger, David Schkade, Norbert Schwarz, and Arthur A. Stone**, “Would You Be Happier If You Were Richer? A Focusing Illusion,” *Science*, 2006, *312* (5782), 1908–1910.
- and **Allan B. Krueger**, “Developments in the Measurement of Subjective Well-Being,” *Journal of Economic Perspectives*, 2006, *20*, 3–24.
- , **Ed Diener, and Norbert Schwarz**, *Well-being: The Foundations of Hedonic Psychology*, New York: Russel Sage, 1999.

- Kannel, W.B., M. Feinleib, P.M. McNamara, R.J. Garrison, and W.P. Castelli**, “An investigation of coronary heart disease in families,” *American Journal of Epidemiology*, 1979, *110*, 281–290.
- Kendler, Kenneth S., Michael C. Neale, Ronald C. Kessler, Andrew C. Heath, and Lindon J. Eaves**, “A Test of the Equal-Environment Assumption in Twin Studies of Psychiatric Illness,” *Behavior Genetics*, 1993, *23*, 21–27.
- Layard, Richard**, *Happiness: Lessons from a New Science*, Penguin, 2005.
- Lesch, K.P., D. Bengel, A. Heils, S.Z. Sabol, B.D. Greenberg, S. Petri, and et al.**, “Association of anxiety-related traits with a polymorphism in the serotonin transporter gene regulatory region,” *Science*, 1996, *274*, 1527–1531.
- Lipsky, Robert H, Xian-Zhang Hu, and David Goldman**, “Additional Functional Variation at the SLC6A4 Gene,” *American Journal of Medical Genetics B Neuropsychiatric Genetics*, 2009, *150B* (1), 153.
- Little, K.Y., D.P. McLaughlin, L. Zhang, C.S. Livermore, G.W. Dalack, and P.R. McFinton**, “Cocaine, ethanol, and genotype effects on human midbrain serotonin transporter binding sites and mRNA levels,” *American Journal of Psychiatry*, 1998, *155*, 207–213.
- Luttmer, Erzo F.P.**, “Neighbors As Negatives: Relative Earnings And Well-Being,” *Quarterly Journal of Economics*, 2005, *120* (3), 963–1002.
- Lykken, David and Auke Tellegen**, “Happiness is a Stochastic Phenomenon,” *Psychological Science*, 1996, *7* (3), 186–189.
- Mackay, T.F.**, “The genetic architecture of quantitative traits,” *Annu Rev Genet*, 2001, *35*, 303–339.
- Martin, J., J. Cleak, S.A. Willis-Owen, J. Flint, and S. Shifman**, “Mapping regulatory variants for the serotonin transporter gene based on allelic expression imbalance,” *Molecular Psychiatry*, 2007, *12* (5), 421–2.
- Munafò, M. R., S. M. Brown, and A. R. Hariri**, “Serotonin transporter (5HTTLPR) genotype and amygdala activation: a meta-analysis,” *Biological Psychiatry*, 2008, *63*, 852–857.
- , **T. Clark, and J. Flint**, “Does measurement instrument moderate the association between the serotonin transporter gene and anxiety-related personality traits? A meta-analysis,” *Molecular Psychiatry*, 2005, *10*, 415–419.

- Neale, M.C., S.M. Boker, G. Xie, and H.H. Maes, “OpenMx - Advanced Structural Equation Modeling (<http://openmx.psyc.virginia.edu/>),” 2010.
- Nes, R. B., E. Roysamb, K. Tambs, J. R. Harris, and T. Reichborn-Kjennerud, “Subjective well-being: genetic and environmental contributions to stability and change,” *Psychological medicine*, 2006, *36* (7), 1033–1042.
- Norton, Edward and Euna Han, “How Smoking, Drugs, and Obesity Affect Education, Using Genes as Instruments,” 2009. Prepared for the Annual Meeting of the American Economic Association.
- Oswald, Andrew J. and Stephen Wu, “Objective Confirmation of Subjective Measures of Human Well-Being: Evidence from the U.S.A,” *Science*, 2010, *327*, 576–579.
- Pezawas, Lukas, Andreas Meyer-Lindenberg, Emily M. Drabant, Beth A. Verchinski, Karen E. Munoz, Bhaskar S. Kolachana, Michael F. Egan, Venkata S. Mattay, Ahmad R. Hariri, and Daniel R. Weinberger, “5-HTTLPR polymorphism impacts human cingulate-amygdala interactions: a genetic susceptibility mechanism for depression,” *Nature Neuroscience*, 2005, *8*, 828–834.
- Plomin, Robert, John C. DeFries, Gerald. E. McClearn, and Peter McGuffin, *Behavioral genetics*, 5th ed ed., New York, NY: Worth Publishers, 2008.
- Price, Alkes L., Nick J. Patterson, Robert M. Plenge, Michael E. Weinblatt, Nancy A. Shadick, and David Reich, “Principal components analysis corrects for stratification in genome-wide association studies,” *Nature Genetics*, 2006, *38*, 904–909.
- Rayo, Luis and Gary S. Becker, “Habits, Peers, and Happiness: An Evolutionary Perspective,” *American Economic Review*, 2007, *97* (2), 487–491.
- Risch, N. and et al., “Interaction between the serotonin transporter gene (5-HTTLPR), stressful life events, and risk of depression: a meta-analysis,” *Journal of the American Medical Association*, 2009, *301*, 2462–2471.
- Scarr, S. and L. Carter-Saltzman, “Twin Method: Defense of a Critical Assumption,” *Behavior Genetics*, 1979, *9*, 527–542.
- Sen, S., M. L. Burmeister, and D. Ghosh, “Meta-analysis of the association between a serotonin transporter promoter polymorphism (5-HTTLPR) and anxiety related personality traits,” *Am. J. Med. Genet. B*, 2004, *127*, 85–89.
- Stevenson, Betsey and Justin Wolfers, “Economic Growth and Subjective Well-being: Reassessing the Easterlin Paradox,” *Brookings Papers on Economic Activity*, 2008, *2*, 1–87.

- Stubbe, J.H., D. Posthuma, D.I. Boomsma, and E.J. De Geus, "Heritability of life satisfaction in adults: a twin-family study," *Psychological Medicine*, 2005, 35 (11), 1581–8.
- Urry, Heather L., Jack B. Nitschke, Isa Dolski, Daren C. Jackson, Kim M. Dalton, Corrina J. Mueller, Melissa A. Rosenkranz, Carol D. Ryff, Burton H. Singer, and Richard J. Davidson, "Making a Life Worth Living: Neural Correlates of Well-Being," *Psychological Science*, 2004, 15 (6), 367–372.
- Van Praag, Bernard and Ada Ferrer-I-Carbonell, *Happiness Quantified: A Satisfaction Calculus Approach*, Oxford University Press, 2004.
- Visscher, P.M., S.E. Medland, M.A. Ferreira, K.I. Morley, G. Zhu, B.K. Cornes, G.W. Montgomery, and N.G. Martin, "Assumption-free estimation of heritability from genome-wide identity-by-descent sharing between full siblings," *PLoS Genetics*, 2006, 2:e41.
- von Hinke Kessler Scholder, Stephanie, George Davey Smith, Debbie A. Lawlor, Carol Propper, and Frank Windmeijer, "Genetic Markers as Instrumental Variables: An Application to Child Fat Mass and Academic Achievement," 2010. University of Bristol, Centre for Market and Public Organisation Working Paper 10/229.
- Wendland, J.R., B.J. Martin, M.R. Kruse, K.P. Lesch, and D.L. Murphy, "Simultaneous genotyping of four functional loci of human SLC6A4, with a reappraisal of 5-HTTLPR and rs25531," *Molecular Psychiatry*, 2006, 11 (3), 224–6.
- Xian, Hong, Jeffrey F. Scherrer, Seth A. Eisen, William R. True, Andrew C. Heath, Jack Goldberg, Michael J. Lyons, and Ming T. Tsuang, "Self-Reported Zygosity and the Equal-Environments Assumption for Psychiatric Disorders in the Vietnam Era Twin Registry," *Behavior Genetics*, 2000, 30, 303–310.
- Xu, H. and S. Shete, "Mixed-effects Logistic Approach for Association Following Linkage Scan for Complex Disorders," *Annals of Human Genetics*, 2006, 71 (2), 230–237.